



# Lea Sideboard

design Paolo Vernier, 2019

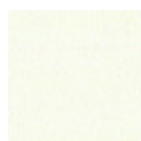
Lea sideboard, storage unit for living area with swing doors in lacquered mdf or covered in fabric, faux leather or leather. Top in lacquered MDF or ceramic. Lea sideboard is available in two versions: with a height of 55 cm or 73 cm. The 55 cm high version features an open shelf in glass.

Supported by the conical feet that maintain the line of the collection, the Lea sideboard is characterized by the extreme lightness of the shapes and the soft design. The coatings of the doors embrace the choice of elegant fabrics or traditional materials making it versatile and original to furnish contemporary environments with continuity.

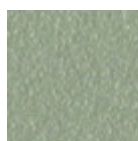


## Colors and Materials

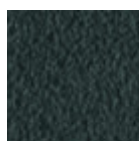
### Structure



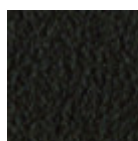
White Steel



Sand Steel



Grafite Steel

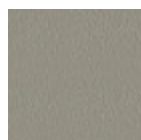


Brown Steel

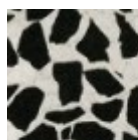


Black Steel

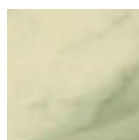
### Coating



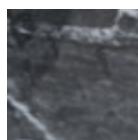
Laquered MDF  
5 Colors



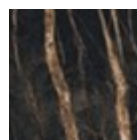
Venetian glossy  
ceramic



Ceramic with effect  
calacatta marble  
1 color



Black greek glossy  
marble ceramic



Noir desir glossy  
ceramic marble

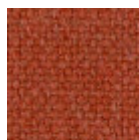
### Extensions



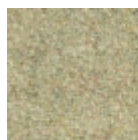
Bubble Fabric  
14 Colors



Carabù Fabric  
15 Colors



Cotton Club Fabric  
13 Colors



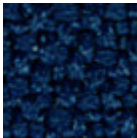
Fenix Wool Fabric  
13 Colors



Hot Fabric  
14 Colors



Main Line Flax  
Fabric  
16 Colors



Mirage Fabric  
6 Colors



Scubidù Fabric  
10 Colors



Second Fabric  
11 Colors



Visual Fabric  
11 Colors



Velvet Superb  
15 Colors



Flexy Faux Leather  
5 Colors



Secret Faux Leather  
22 Colors



Vintage Faux Leather  
12 Colors



Fiore Leather  
18 Colors



Vintage Leather  
4 Colors

## Dimensions

Dimensions

## Volumetric Details

Weight 80 Kg  
Volume 1.52 mc  
Package 2

Image not found or type unknown

	A (cm) (inch)	B (cm) (inch)	C (cm) (inch)
H 55 (cm) (inch)	55 21.7	108 42.5	40 15.7
h 73 (cm) (inch)	73 28.7	210 82.7	48 18.9